

# SOLAR SUPPORT SOLUTIONS

PV Panel Mounting & Supporting Steel Structures



**SHINSUNG  
CONTROL**  
ISO 9001:2008

## TOTAL SERVICE

A reliable, and environmentally friendly system is achieved through pre-consulting and the verification of MIDAS program. MIDAS Gen is used to perform structural analysis and render 3D models of steel structures



## DESIGN

Product development collaboration with POSCO for steel structure designs using MIDAS Gen.



## MATERIAL

C Section/ H Section / I Section  
Corrosion resistance (POSMAC, GIX, GLX, Hot dip Galvanized)



Roll forming

## QUALITY

Quality raw materials, direct sourcing from POSCO  
Hyundai Steel and Dongkuk Steel

# High corrosion resistance POSMAC, GIX, GLX

 > 01

**Corrosion resistance** Optimal corrosion resistance which is more than 5 ~ 10 times compared with general zinc plated steel

 > 02

**Economic** Time and cost saving effect in the maintenance during long term use

 > 03

**Utilization** Can be used in environments where the same hot dip galvanized products may not be suitable

 > 04

**Durability** Lasts about 5 times longer than existing hot dip galvanizing



# TOTAL SERVICE


A reliable, and environmentally friendly system is achieved through pre-consulting and the verification of MIDAS program. MIDAS Gen Version 8.6.0 (GEN 2017) is used to perform structural analysis and render 3D models of steel structures





**Solar Panel**  
Korea Energy Corporation Certified  
KS Certified  
10 year product warranty


## PV Panel Mounting Supporting Steel Structures

C section/ H section / I section  
Corrosion resistance (Hot dip Galvanized / POSMAC)

 **Consulting Services**  
1: 1 customized consultation with consulting specialist

 **Manufacturing**  
Self-production automation  
Roll Forming Stability safety through MIDAS

 **Profitability**  
Self-production, reduction of initial installation cost and maximization of profitability

 **Materials**  
Variety of structural materials special  
C section / H section / I section  
POSMAC, GIX and GLX

 **Warranty**  
Quality assurance  
Certified by Korean Energy Cooperation  
Usage of KS products (modules & inverters)

 **Reliability**  
Reliable steel structures  
Extended warranty  
Product and material certification and test reports

## 01 SLOPE FIXED TYPE STRUCTURE

Its basic, stable and light weight structure guarantee easy installation  
Secures accurate structure through on-site measurement



## 02 GROUND FIXED TYPE STRUCTURE

It guarantees long durability as the safety  
Efficiency are considered through in-depth analysis of site



## 03 TRACKING TYPE STRUCTURE

Optimized support of angles and dimensions to  
suit your needs



## 04 SOLAR PHOTOVOLTAIC STRUCTURE

Environmentally friendly energy. Advantages: Anti Corrosion  
steel using POSMAC



# Business Areas



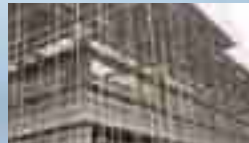
**RENEWABLE ENERGY**  
SOLAR & ESS

## ORIGINAL DIVISIONS

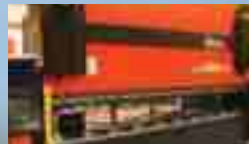
**ROAD SAFETY**  
GUARDRAIL



**TEMPORARY CONSTRUCTION**  
SCAFFOLDING



**STEEL SERVICE**  
NCT



## NEW DIVISIONS



**ROAD SAFETY**  
IMPACT ATTENUATOR



**TEMPORARY CONSTRUCTION**  
SMART PANEL



**PERMANENT CONSTRUCTION**  
CABLE TRAY



**Automated Production**

Optimal Quality and Accuracy  
Easy on site assembly



**Light weight**

Semi-permanent Steel Structures  
Corrosion Resistance



**Total service**

Optimal structural designs  
Post management  
(operation and maintenance)  
through MIDAS GEN

**SEOUL OFFICE**  
1406, DEARYUNG TECHNO TOWN  
481-11, GASANDONG.  
GEUMCHEON  
SOUTH KOREA  
TEL: +82-2-2463-0661  
FAX: +82-2-2163-0660

**MAIN FACTORY**  
75-75, INJU-SANDANRO  
INJU-MYUN, ASAN-SI,  
CHUNGCHUNGNAMDO  
SOUTH KOREA  
TEL: +82-41-541-6741  
FAX: +82-41-541-6740

